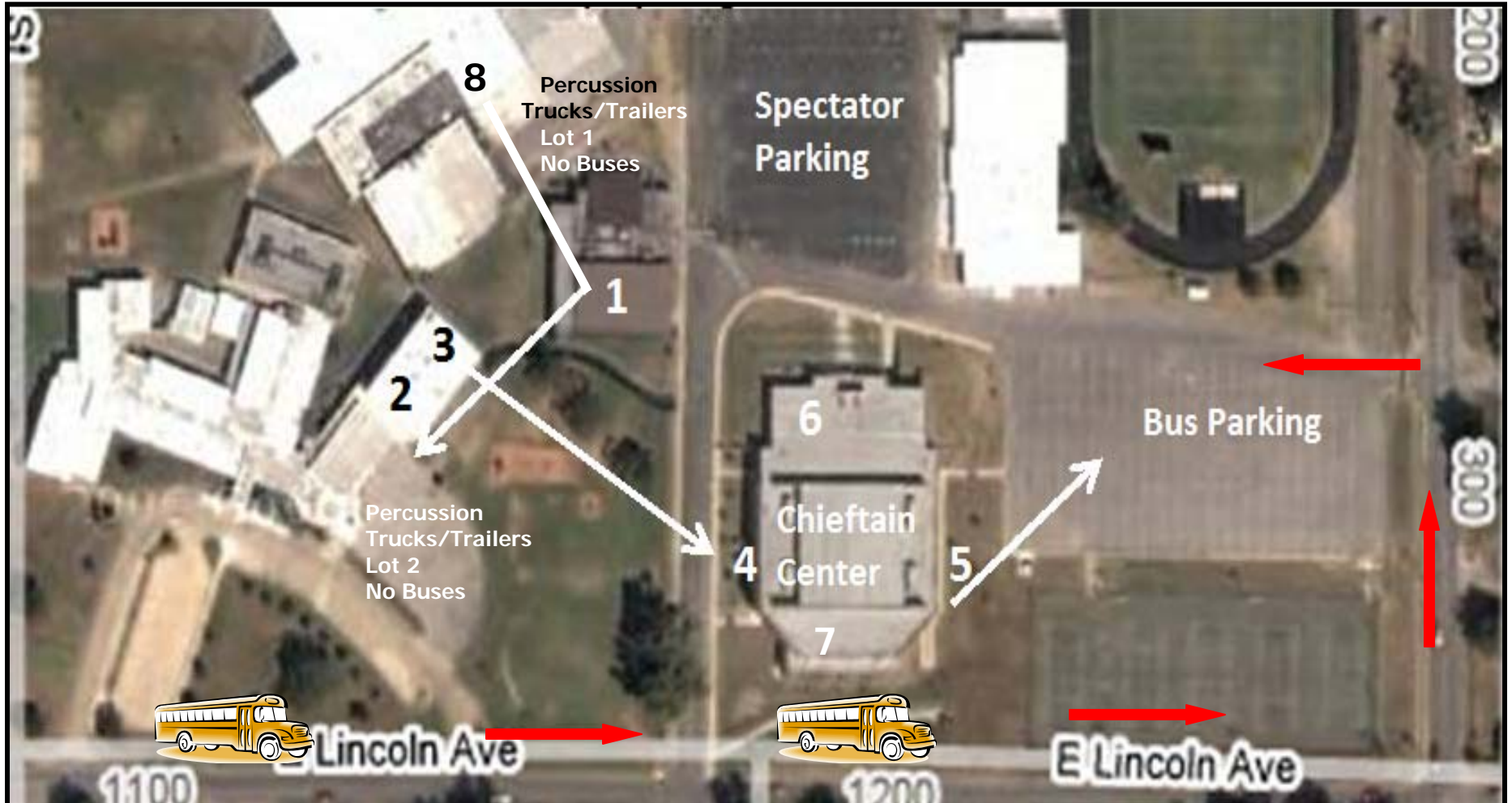


Sapulpa High School



1. Percussion Warm Up A /Director Hospitality
2. Body Warm-Up
3. Equipment Warm-Up/Percussion Warm Up B
4. Entrance for Performing Group/Prop Unloading

5. Exit following Performance
6. Critique
7. Prop Storage
8. Student Equipment Storage/Guard Check-in