

Y U K O N



B A N D S

DIRECTIONS TO YUKON HIGH SCHOOL

From I-40: Take exit 138 (Yukon Parkway / Mustang Rd). Go to end of off ramp and turn north. Go 1 mile and campus will be on your left. Turn into main entrance at the front of YHS and then turn right at the T.

From Kilpatrick Turnpike: Take I-40 West exit. Stay on service road to stoplight. Turn North/Right and go 1 mile. Campus will be on your left. Turn into main entrance at the front of YHS and then turn right at the T.

From Rt 66: Go to the stoplight at Yukon Parkway. Turn south and go 3 miles. Campus will be on your right. After you cross the railroad tracks turn into the main entrance at the front of YHS and then turn right at the T.

MAPS

Please refer to the campus map and the school map included in this packet.

PARKING AND EQUIPMENT LOGISTICS

Turn into the main entrance and go right at the "T." This road will take you around to the side of YHS where our staff will meet your bus and guide you to the location where your floor, equipment and students can be offloaded. After offloading, your bus driver will be directed to the bus parking area. Please park busses and vehicles with trailers in the bus area only and do not take up room in the spectator area.

UNIT CHECK-IN

Unit check-in area is listed on the map. This is also the location where you will meet your guide 5 minutes prior to warmup time to be led to your warmup area. At unit check-in our staff will have your wristbands and direct you to your unit's holding area within YHS.

HOSPITALITY AREAS

The included maps and signs within YHS will direct you to the director hospitality and bus driver hospitality rooms. Please do not allow your students to enter these areas under any circumstances.

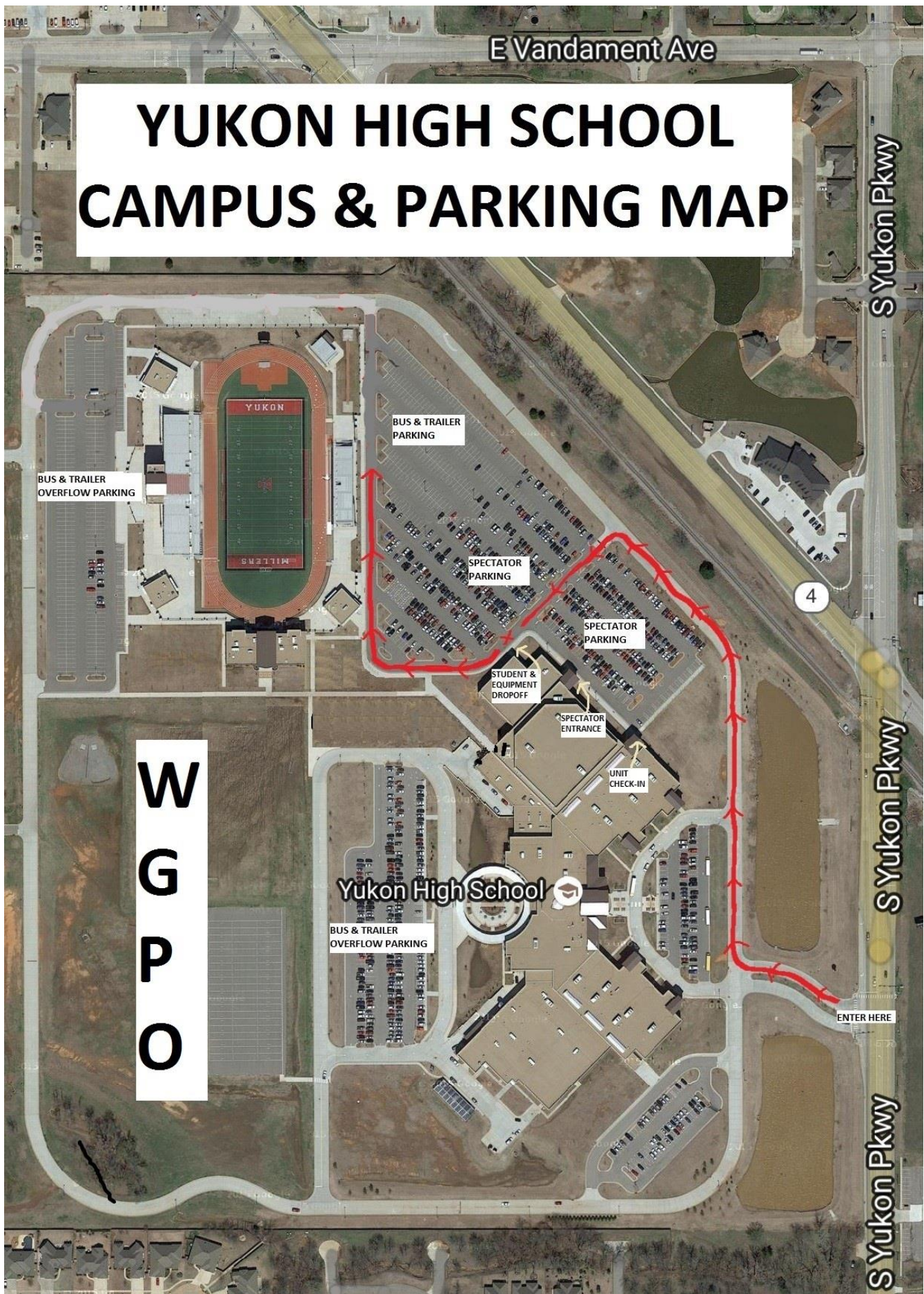
ADMISSION/WRISTBANDS

WGPO guidelines re: wristbands and ticket prices will be followed. Due to the size of our venue, we do not plan to have separate wristbands or separate seating for competitors. Admission to the gymnasium is allowed only with a wristband or a WGPO badge.

ADA ACCESSIBILITY

An elevator is available for those unable to climb stairs. Notify our staff at the wristband purchase area that you need to ride the elevator and they will arrange for someone to guide you.

YUKON HIGH SCHOOL CAMPUS & PARKING MAP



W
G
P
O

Yukon High School

BUS & TRAILER
OVERFLOW PARKING

BUS & TRAILER
PARKING

SPECTATOR
PARKING

SPECTATOR
PARKING

STUDENT &
EQUIPMENT
DROPOFF

SPECTATOR
ENTRANCE

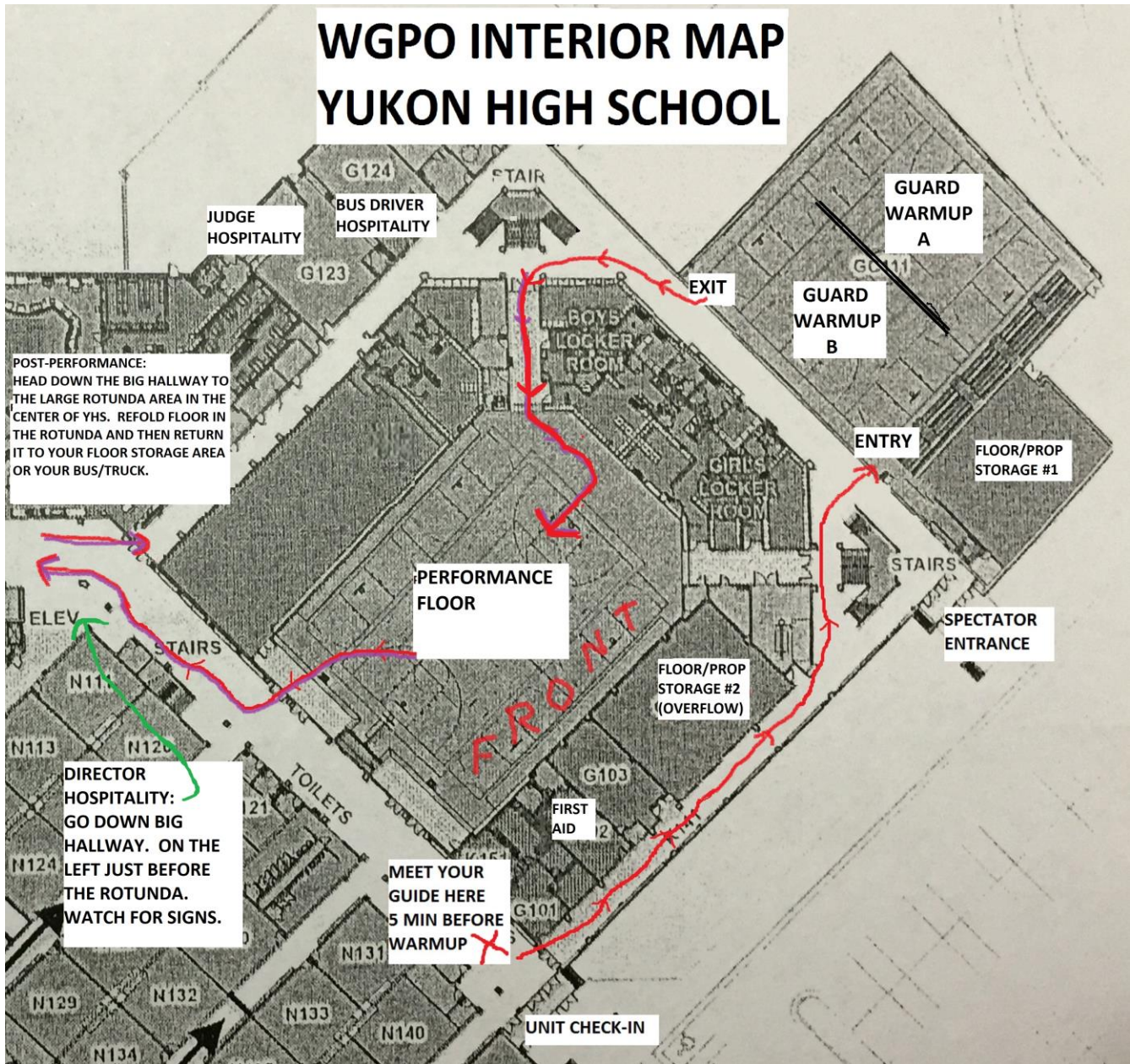
UNIT
CHECK-IN

BUS & TRAILER
OVERFLOW PARKING

ENTER HERE

4

WGPO INTERIOR MAP YUKON HIGH SCHOOL



NEED HELP?

We want you and your students to have a great experience on our campus. Our parents and students will be there to help you in any way you need. **My cell phone number is 405-830-0967.** Texting is the best way to get ahold of me on contest day (or any day!). Please let me know what my staff and I can do to help. See you soon!!

Darnell Zook