



Winter Guard & Percussion of Oklahoma Solo & Ensemble/Guard Only Competition

Western Heights High School
Saturday, February 22, 2020

Welcome to Western Heights Public Schools and the Winter Guard & Percussion of Oklahoma February 22nd contest presented by Winter Guard & Percussion of Oklahoma! We are excited to have all of you on campus for this event and look forward to all the performances. I hope this letter finds you well and gives you answers to all your questions and concerns. Please feel free to ask any of our parent volunteers or students for help throughout the day! See you there!

Directions to Western Heights High School

School Address
8201 SW 44th St.
Oklahoma City, OK 73179

Driving Directions

From I-40 Exit on Council Road headed south.

Turn west (Right) onto SW 44th St., the school and stadium are on the north side of the street.

Buses/Trucks: Enter at the 2nd entrance (east side of the High School). Unit Drop-off is halfway up the east side of the school and marked with signs. Please follow the maps to bus parking after drop-off.

Spectators: Enter at the 2nd entrance. All parking along the east side of the High School and by the 9th Grade Center should be available.

From Hwy 152 Exit Council Road headed north.

Turn west (Left) onto SW 44th St., the school and stadium are on the north side of the street.

Buses/Trucks: Enter at the 2nd entrance (east side of the High School). Unit Drop-off is halfway up the east side of the school and marked with signs. Please follow the maps to bus parking after drop-off.

Spectators: Enter at the 2nd entrance. All parking along the east side of the High School and by the 9th Grade Center should be available.

Remind

We will be utilizing the remind system in case you need to reach me, the staff, or have questions. Please send the information below and reply with your name and school so I can help as best as possible!

Send a text to:

81010

With message:

@wgpofeb22

Solo/Ensemble Info

Solo and Ensemble times are at the end of this packet. Performances will take place in the main performance gym and the pathways will be the same for warm-up, entrance, and exit. Please see the attached maps for pathways. We tried to keep all paths the same for consistency throughout the day.

Admission

Spectators will enter through the awning glass door entrance between the High School and 9th Grade Center. There will be signs posted for entrance. WGPO Admission is \$8 for all spectators.

Per WGPO Guidelines, marching members plus TEN (10) will be admitted free. All others must pay admission. This includes equipment crew, instructors, parents, designers, etc. as defined per WGI manual. School administrators will be allowed one (1) free pass with a valid OSSAA Pass.

Parking

Spectator Parking will be on the East side of the high school. There is additional overflow on the east side of the stadium with the buses, and is listed on the attached map. Please follow the signs and do not park in front of the Middle School, as the area is also shared by an OSSAA event being held there.

Bus/Truck Parking will be located on the East side of the Stadium. You may drop off your Guard Unit and Equipment/Props/Floors as indicated by the map, but please instruct your drivers to then park on the East Side of the Stadium. There is an OSSAA event being held on the Middle School campus and we have been asked to reserve that parking lot for them.

If you have any questions, please see the attached map. There will be parking signs the day of the event, as well as students and faculty around to answer questions.

Unit Check-In

Unit check-in will be located in the commons area entrance along the east side of the High School. Please see the attached map for further information. Guides and event staff will be available for assistance as needed.

Unit Holding Areas

Units will be escorted after check-in to their designated holding stations separated by school. Please remember to keep your area and equipment neatly stacked to allow other units to pass throughout the day.

Dressing Rooms

There are separate restrooms available for students throughout the day which may be utilized for unit dressing. We will try to have an area open in each hallway for the unit's use.

Prop/floor Drop-Off, Storage, and Pick-up

Props and floors should be dropped off at the northwest corner of the high school. Your prop/floor vehicle will need to follow the pathway around the school to the drop off point for traffic flow purposes. Props and floors may be stored for the duration in our back gym of the High School. Props and floors will be able to enter along the northwest side of the gymnasium for performances and exit on the southwest side for folding. The entrance and exits for props will be the same. The storage area is also marked on the attached map.

After drop-off, the prop/floor vehicle will follow the pathway to park with the buses beside the stadium.

Guard Warm-Up

Your guide will meet your unit and escort them to the Middle School Gym, directly behind the High School for warm-up. There will be a dividing curtain for Warm-up Areas A and B. As per WGPO Guidelines, all equipment is subject to inspection for proper taping and padding prior to warm-up. This includes any props that come in contact with the floor of the performance area. Please refer to the WGI manual for more details.

We are being asked to protect our floors as best as possible by our administration and athletic staff. Our admin just replaced a large portion of the performance gym floor after it was damaged by another group this week. Therefore, sabers will be asked to only toss in designated areas of the warm-up due to limited floor covering and padding available in the warm-up gym. Please help us out by following this guideline and working with our administration. We are sorry for any inconvenience, but appreciate your understanding!

Unit Performance, Entrance, and Exit

After warm-up in the Middle School, units will be escorted through the same door as prop/floor drop-off and follow the pathway to the northwest entry door to the performance gym. The walk is very short and quick. Unit's will meet their props and floors this same entrance. We will be utilizing a **HORIZONTAL TIMELINE** for this contest. After the performance, units, floors, and props will all exit through the southwest corner of the performance gym and carry the floor up 3 steps to head back across to the Middle School cafeteria for floor folding. The floor may then be returned to the storage room after folding or met by your equipment vehicle outside the main Middle School Gymnasium doors.

Judging Assignments

- GE Taylor Sitzman
- GE Todd James
- DA Brent Rowland
- MV josh Swain
- EQ Amy Lueb
- T&P Eamon Shoghi
- CJ – Jeremy Stevens

Director's Hospitality

The director's hospitality room will be located in the High School Teacher's Lounge, and is also displayed on the attached map. It is located just south of the spectator gym entrances and will be marked with signs. There will be snacks and drinks available.

Concessions

Concessions will be available throughout the event beginning at noon in the main lobby for your enjoyment. Kona Ice will also be available in the same area.

Medical/First-Aid

There will be a first-aid station on call for this contest. Our medical personnel are limited, but they will be a phone call away at all times.

Director's Packets and Wristbands

Your Director's Packet will include contest information, maps, timelines, and enough wristbands for your students and staff as per WGPO Guidelines. Anyone entering the gymnasium, regardless of entrance used, must have a wristband to enter. **This includes anyone helping with your floor or props.**

Massing/Awards

Captain Massing will commence following the final unit's performance. We will ask captains to meet in the prop/floor storage area to line up.

Questions/Help

We want your student's experience to be a superior one while on campus. We will have parent and student volunteers to help you throughout the event as needed. If you need to reach me, the best way is through the contest's Remind101. Please let me know what I can do to help!

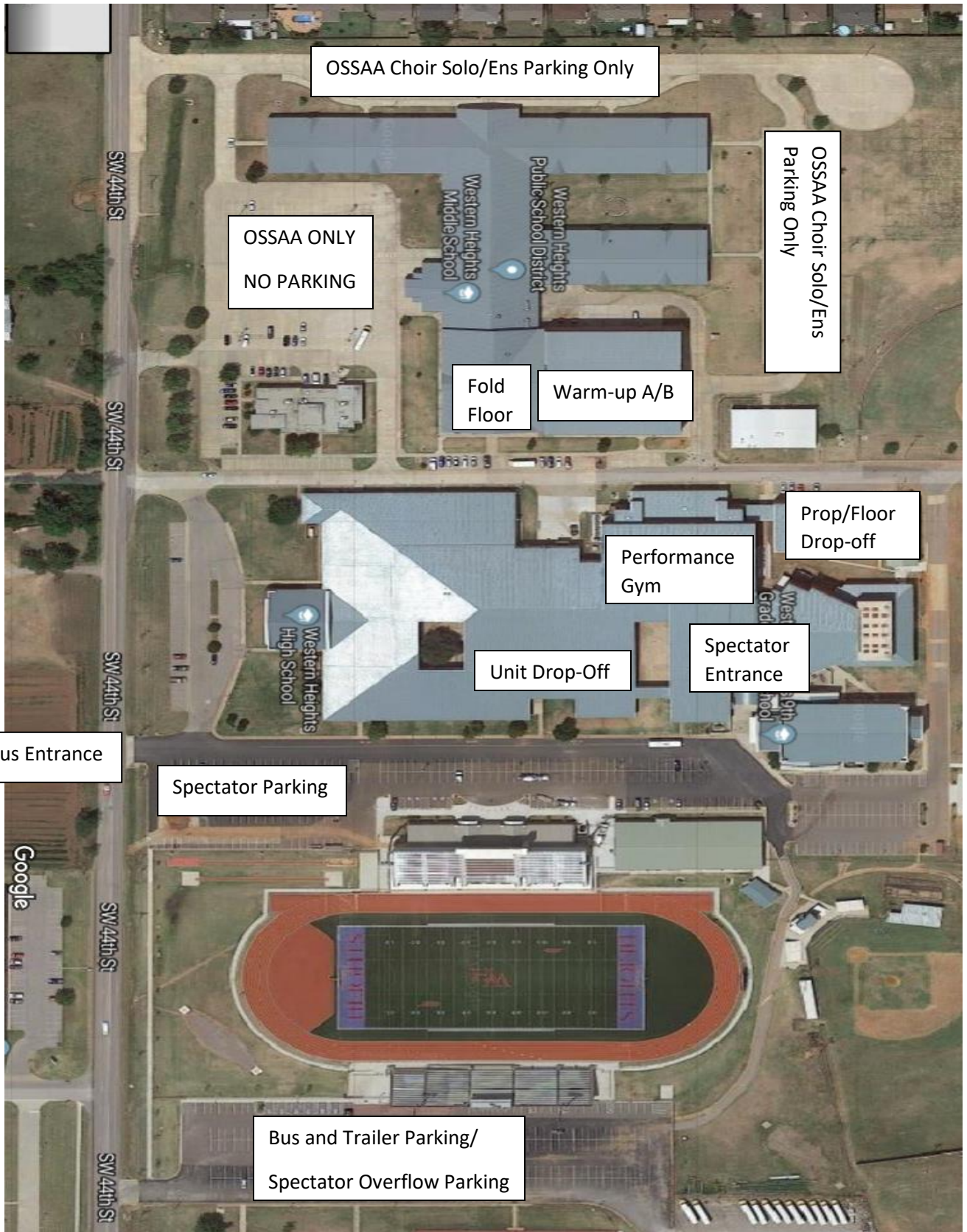
Additional Info

OSSAA Choir Solo and Ensemble Contest is also taking place on our campus at our Middle School. It should not interfere with the WGPO Contest, but please inform your patrons, spectators, family, friends, etc. that they must not park around the middle school due to limited spaces for those participants. We sincerely appreciate your help with this!

We are excited to see everyone on February 22nd and we wish everyone a great performance!

Sincerely,

Lane A. Folds
Director of Bands
Western Heights Public Schools
Lane.A.Folds@WesternHeights.k12.ok.us



OSSAA Choir Solo/Ens Parking Only

OSSAA ONLY
NO PARKING

OSSAA Choir Solo/Ens
Parking Only

Fold
Floor

Warm-up A/B

Prop/Floor
Drop-off

Performance
Gym

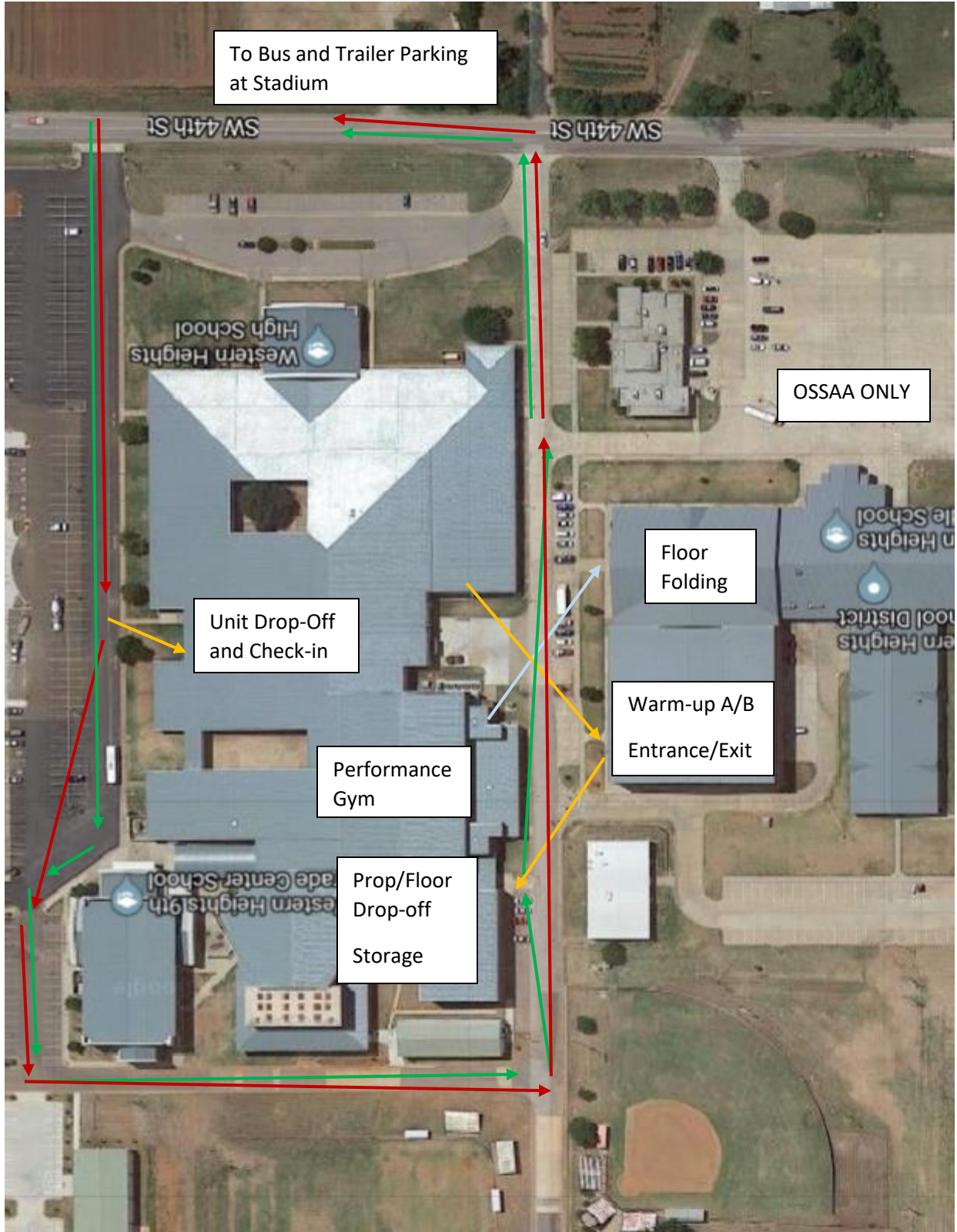
Unit Drop-Off

Spectator
Entrance

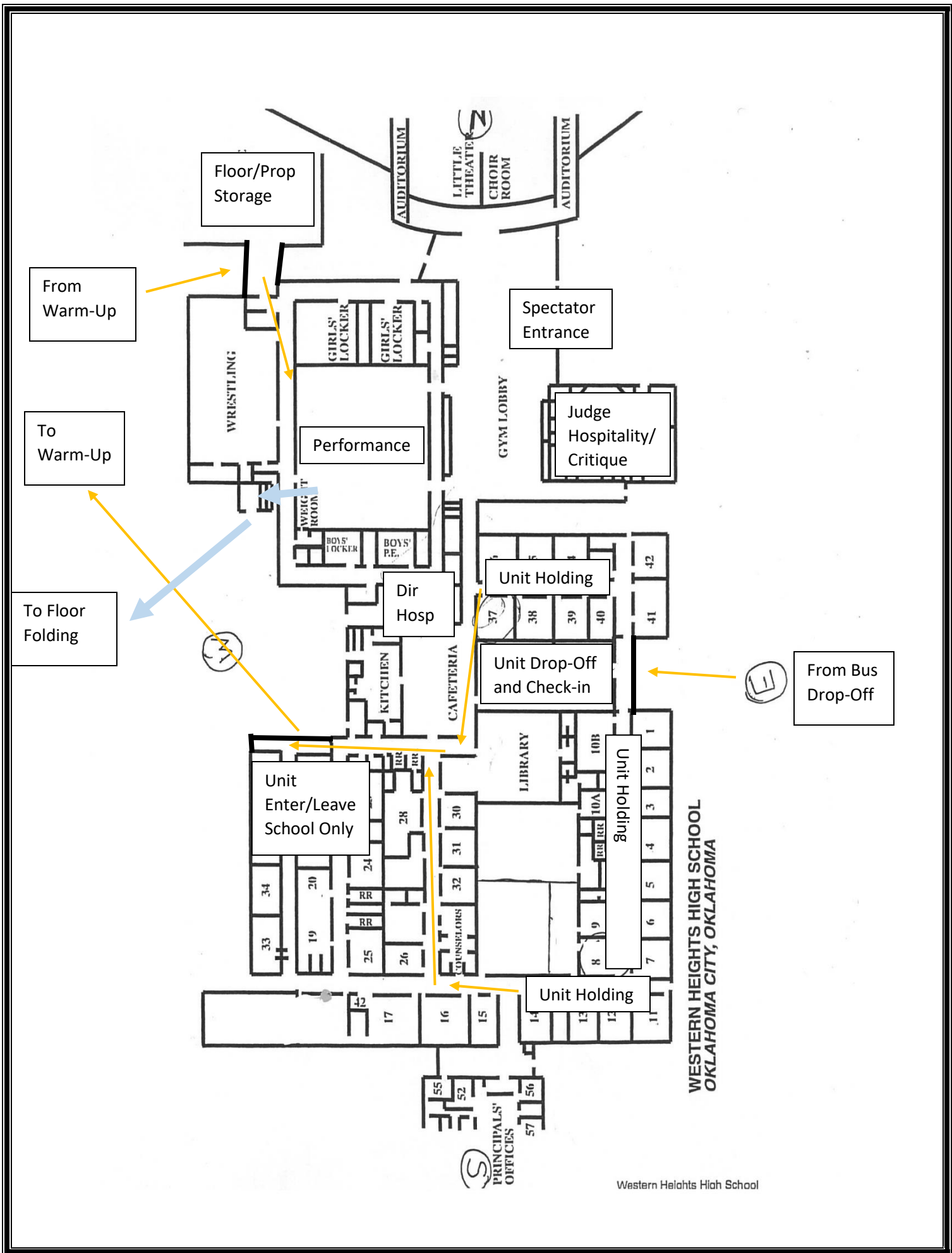
Bus Entrance

Spectator Parking

Bus and Trailer Parking/
Spectator Overflow Parking



Red: Bus Yellow: Guard Units Green: Prop/Floor/Equipment Vehicle
 Light Blue: Guard Path to Fold Floor after Performance



West

Guard
Exit

HORIZONTAL Timeline

Guard
Entrance

Audience

Announcer

South

North

East

