



Thank you for selecting to attend the WGPO contest at Jenks High School. Our goal is to provide you and your students the opportunity for the best and most rewarding performance conditions possible. Please contact any Jenks staff member or the WGPO Contest Director if you have any questions not addressed in this packet.

## ***Contest Flow***

**Units are to arrive no earlier than 30 minutes before your scheduled warmup time.**

- **Unit Check-In**

Unit Check-In is located inside the doors of the Dining Hall (See Campus Map 2). Due to COVID restrictions, there are **NO** guard holding areas at this contest. All units are to remain on their bus. Only the director should enter the building to check in the unit. Directors should have an accurate count of how many performers are attending the contest before entering Unit Check-in. Once your unit is checked in, your bus will be instructed to move to the Warm-up parking lot.

- **Floor/Prop Unloading & Loading**

Equipment vehicles should go to the Performance Venue (See Campus Map 1 and Performance Venue Flow Map) where they can unload. Once unloaded, those vehicles will move to their designated parking area (See Campus 4).

- **Equipment & Prop Inspection**

Equipment and props should be properly taped and padded so to not damage the floor in the Warm-up areas and Performance Venue. See WGI Manual for details.

- **Warm-up Area**

Your guide will arrive outside your bus approximately 20 minutes before your scheduled warm-up time. Your guide will escort you to the Warm-Up Gyms (See Campus Map 3). Your bus will wait for you while you're in warm-up. Once your unit finishes warm-up, your unit will re-board your bus and then be driven to the performance venue. (See Campus Map 1). Your driver will be given a map at Check-in where to drop you off and pick you up at the Performance Venue.

- **Performance Venue**

Your bus driver will follow the designated route to the performance venue where they will drop your unit off. Your guide will meet you as you exit the bus and lead you into the performance venue. At that time, your floor and prop crew should move your props and floor to Unit Entry as indicated on the Performance Venue Flow map.

- **Floor Refolding**

There will be no floor refolding area provided at the contest site.

- **Concessions**

Concessions is located in the main lobby of the Performance Venue.

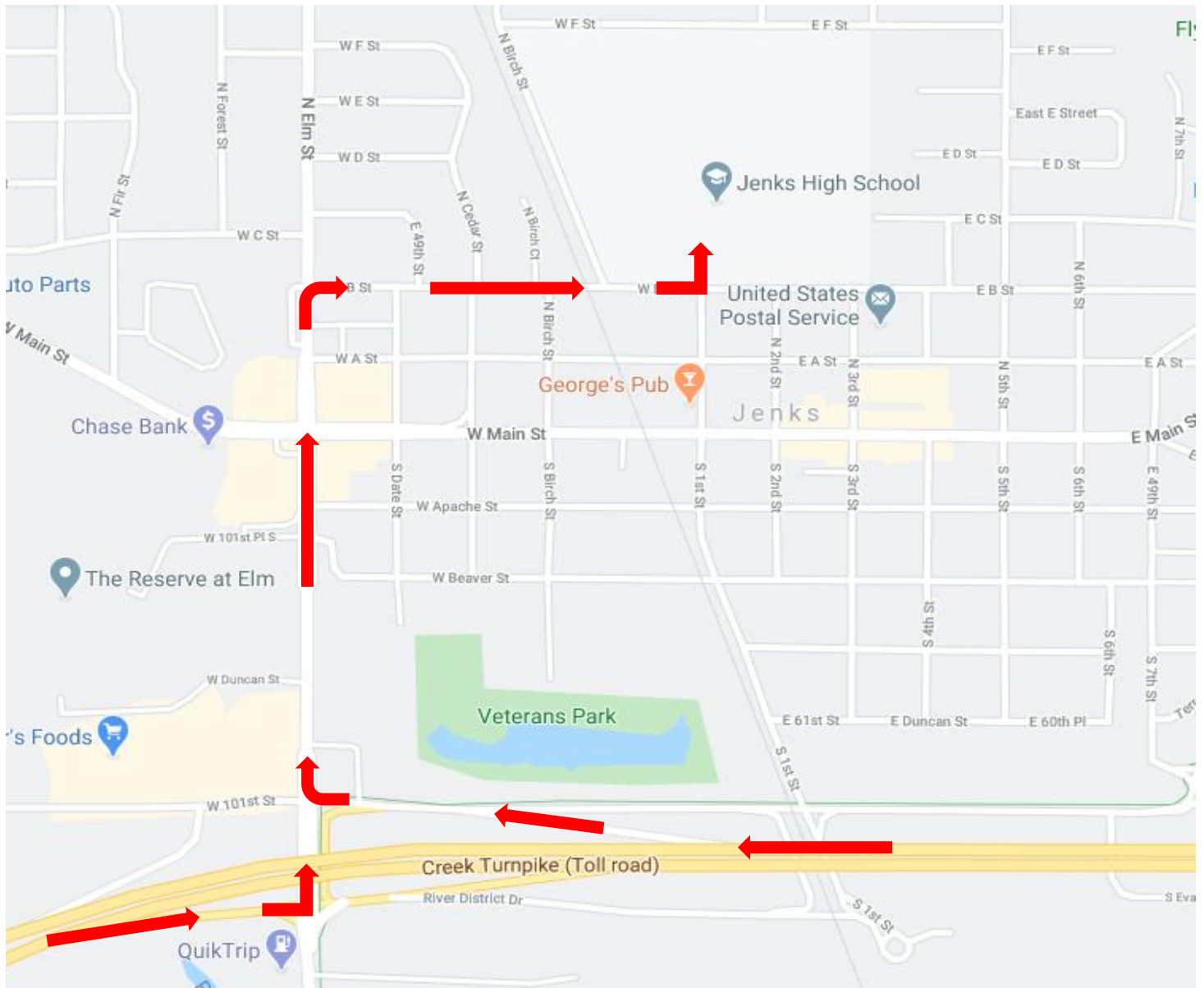
- **Retreat**

There will be NO retreat at this contest.

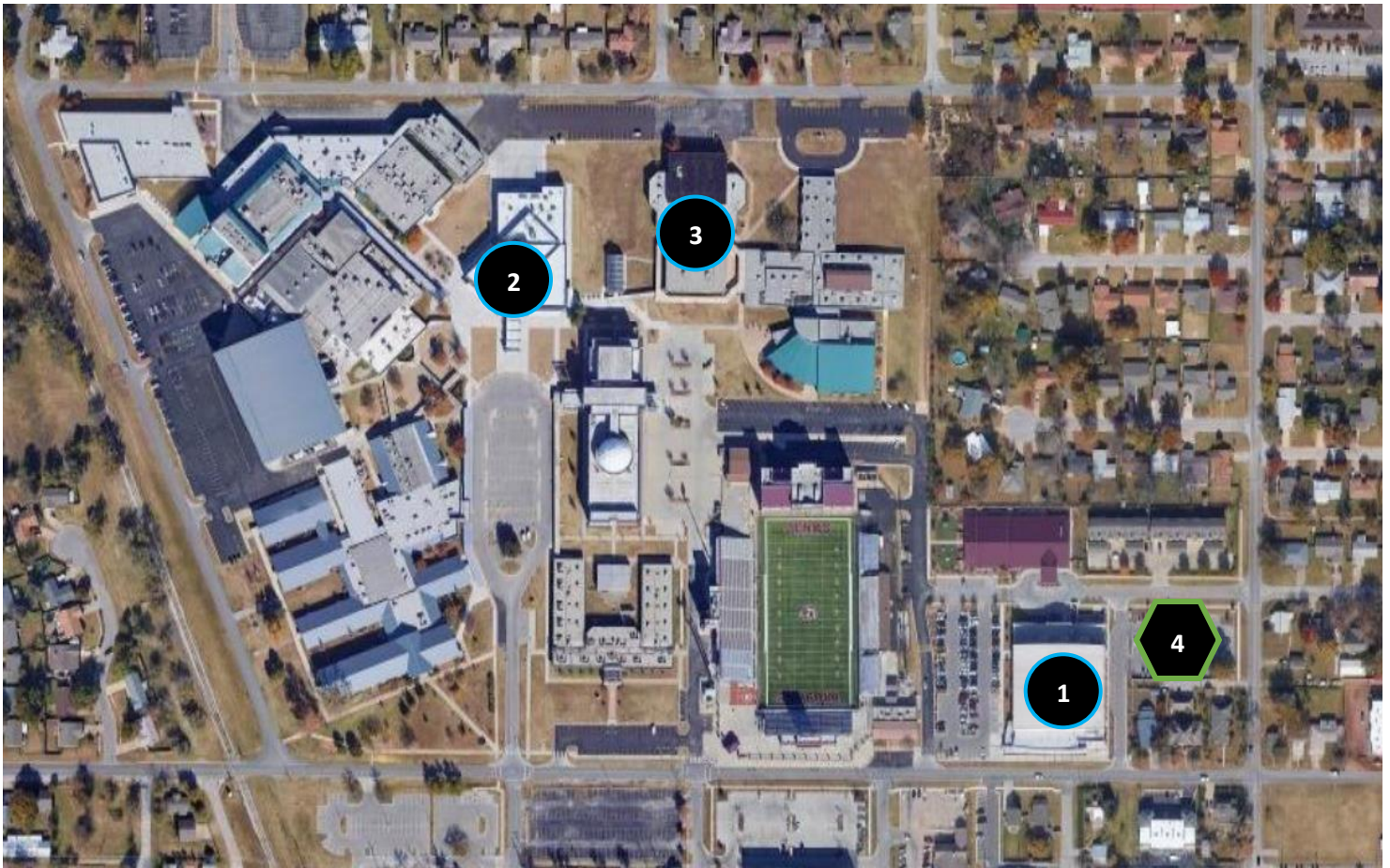
# ***Directions***

**Jenks High School**  
**205 East B Street**  
**Jenks, OK 74037**

Units should take the Creek Turnpike and exit at the “Peoria-Elm Jenks” exit. From there, you will turn north on S. Elm St. After passing through the stoplight at W. Main St., make a right turn at the next stoplight on W. B St. Cross over the railroad tracks and turn north at the stop sign which is N. 1<sup>st</sup> St. There you will be met by a Traffic Coordinator wearing a florescent yellow safety vest who will direct you to Unit Check-In.



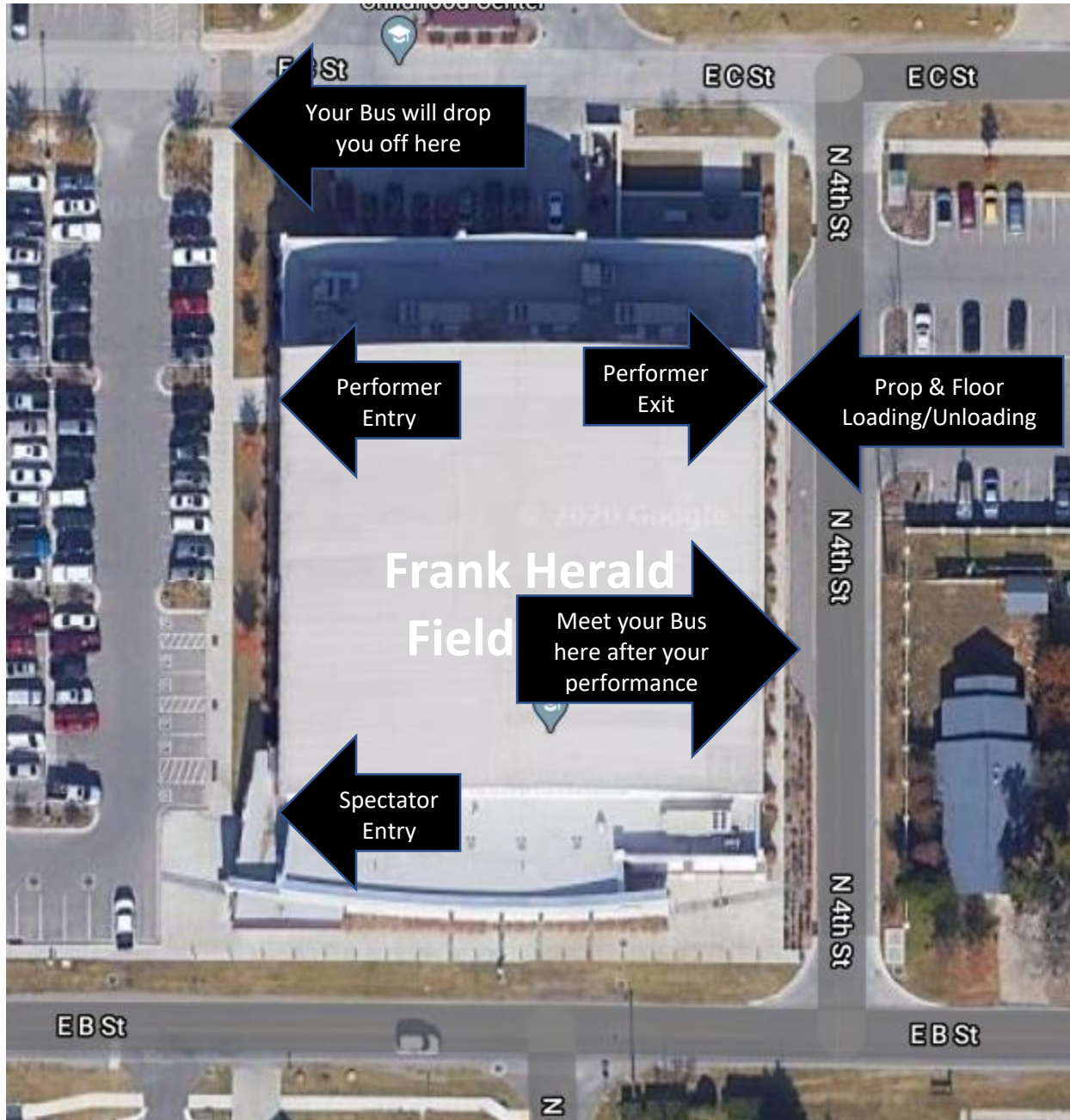
# ***Campus Map***



1. Performance Venue
2. Unit Check-in
3. Warm-Up Gyms
4. Equipment Vehicle Parking



# ***Performance Venue Flow***

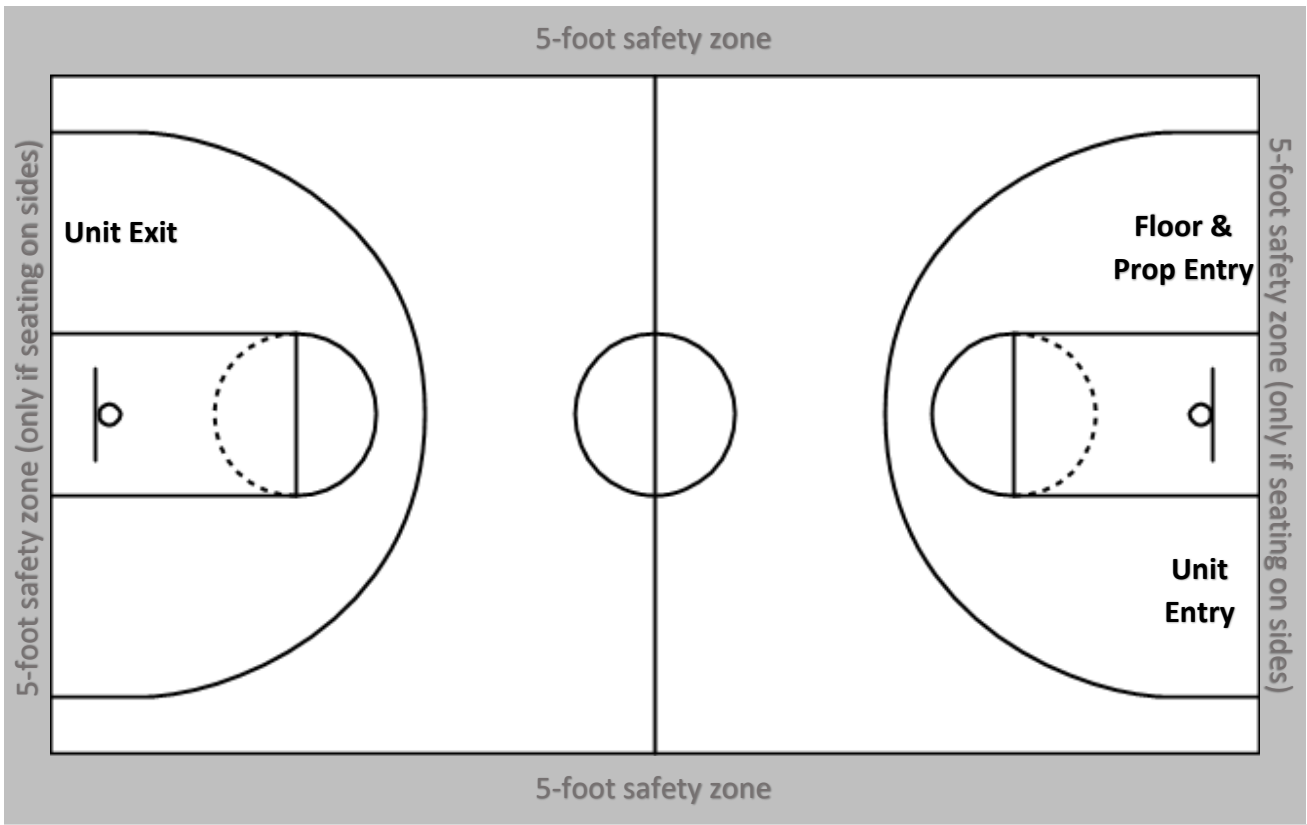


# Performance Venue

## Jenks High School

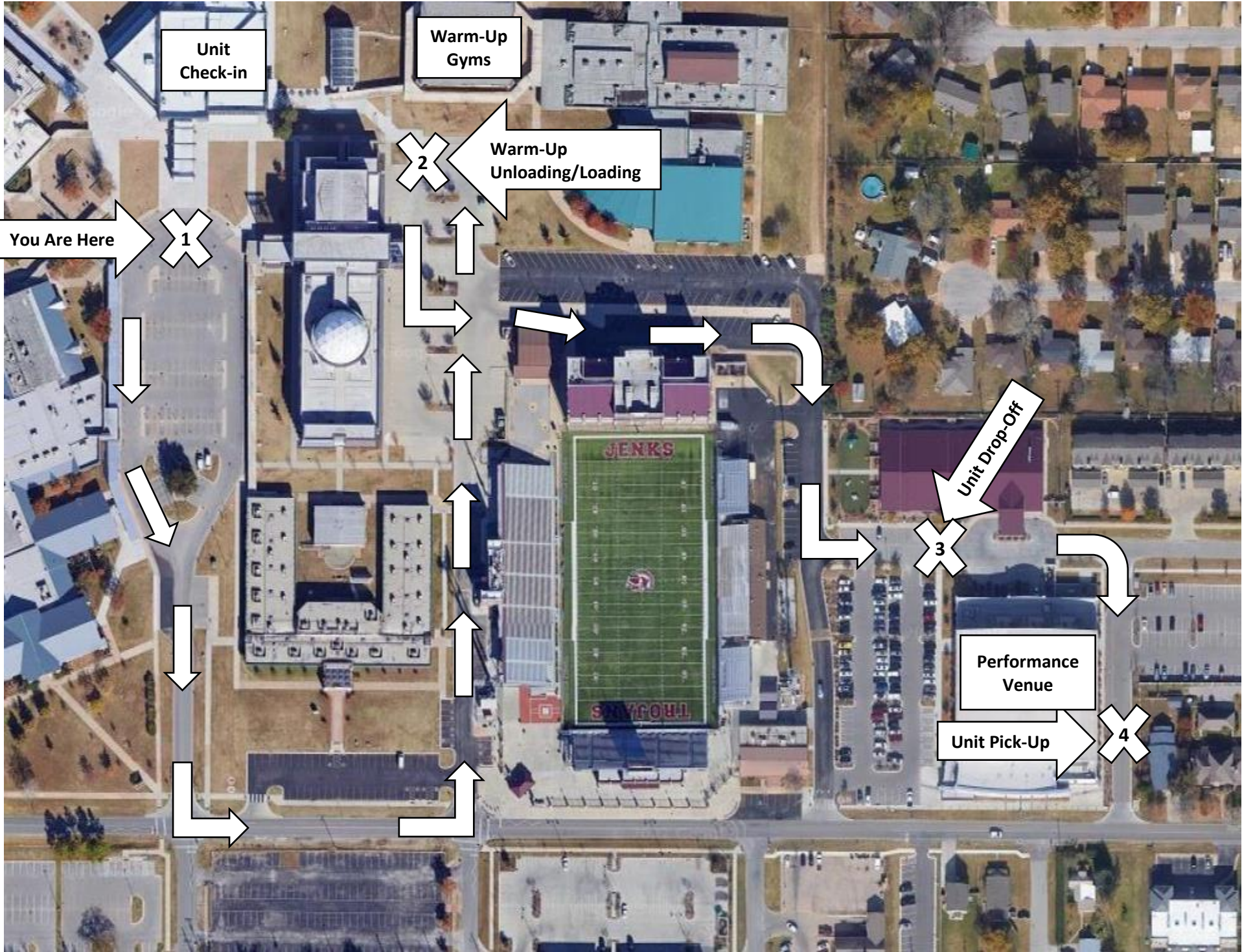
### Frank Herald Fieldhouse





# Spectator Seating





Unit  
Check-in

Warm-Up  
Gyms

Warm-Up  
Unloading/Loading

You Are Here

Performance  
Venue

Unit Pick-Up

Unit Drop-Off

1

2

3

4