



Thank you for attending the 2022 WGPO Guard Championships being held this year at Jenks High School. Our goal is to provide you and your performers with the opportunity for the best and most rewarding performance conditions possible. Please contact any Jenks contest staff member or the WGPO Contest Director if you have any questions not addressed in this packet.

Contest Flow

- **Unit Check-In**

Unit Check-In is in the Dining Hall (see Campus Map - 1). Directors should have an accurate count of how many performers and staff are attending the contest before arriving at Unit Check-in. Once your unit is checked in, you will be guided to your assigned guard area. Your bus will be instructed to move to Bus Parking (see Campus Map – Bus Parking) where it can park for the entire day.

- **Floor/Prop Unloading & Loading**

Equipment vehicles go directly to the Prop & Floor Unloading doors located on the east side of the Performance Venue (See Campus Map - 8 & Performance Venue Flow Map). Once unloaded, vehicles will be instructed to move to the designated parking area (See Campus Map -10).

- **Equipment & Prop Inspection**

All Equipment and props must be properly taped and padded so to not damage the floor or floor covering in the Warm-up areas and Performance Venue. See WGI Manual for details.

- **Warm-up Areas**

Your guide will arrive at your assigned Guard Area approximately 20 minutes before your scheduled warm-up time. You will then be guided to the Warm-Up Gyms (See Campus Map – 6 & 7). Once your unit finishes warm-up, you will be guided to the Performance Venue (See Campus Map – 8).

- **Performance Venue**

Once you arrive at the Performance Venue, your floor/prop crew will need to move your floor and props to Floor & Prop Entry (See Performance Venue Diagram – Floor & Prop Entry).

- **Floor Refolding**

Weather permitting, there will be an outdoor floor refolding area provided. This will be a parking lot as you exit the east side of the Performance Venue (See Performance Venue Flow)

- **Concessions**

Concessions is located in the lobby of the Performance Venue. There will be a concessions annex located in the Dining Hall.

- **Retreat**

There will be 3 separate full guard retreats at this contest.

The MS and NOV Class Retreat will begin at about 10:40 am.

The SRB & SRA Class Retreat will begin at about 5:00 pm.

The SB, SA, IA & SO Class Retreat will begin at about 9:00 pm.

- **Timeline**

Vertical

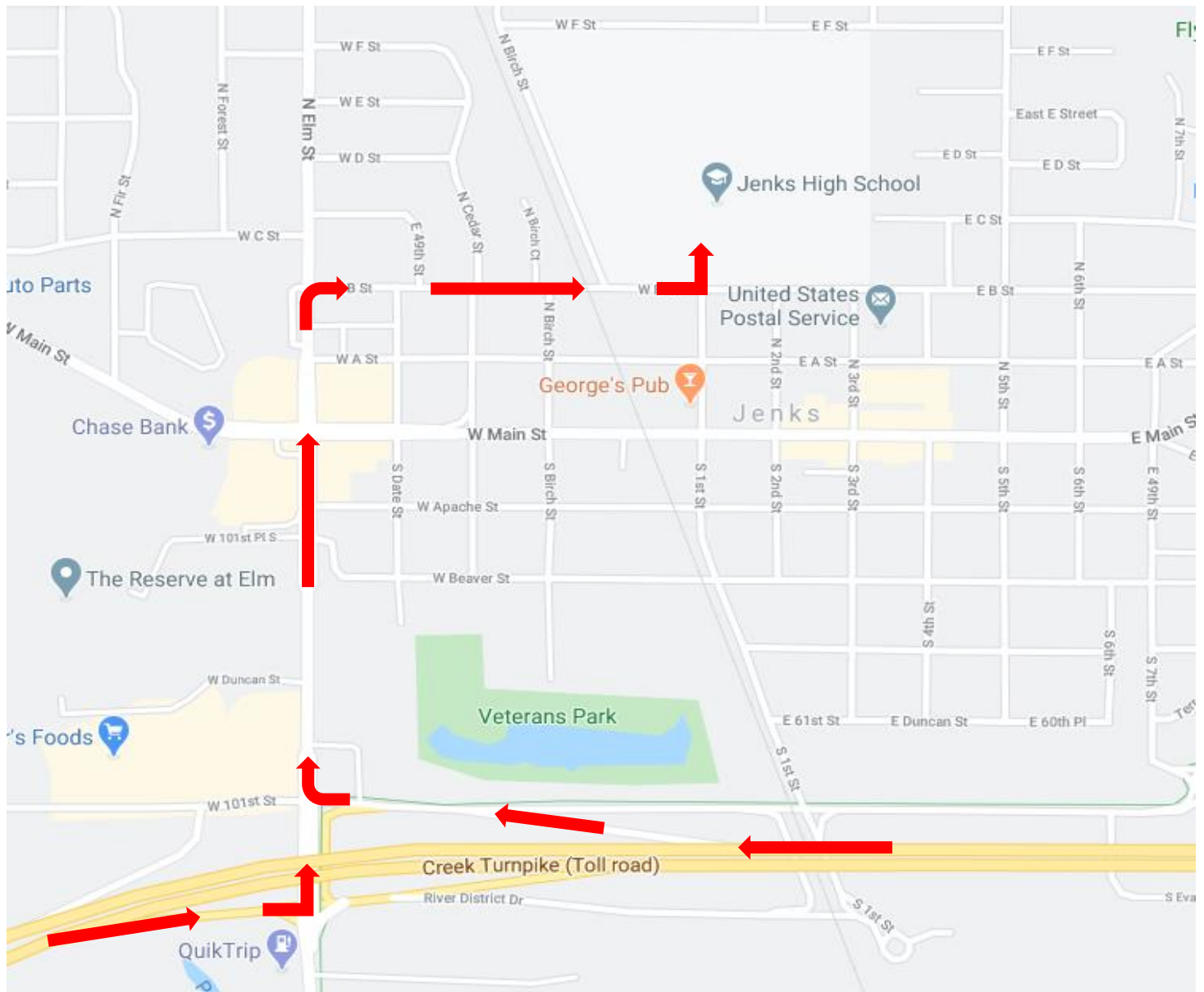
- **Food**

ALL meals must be delivered, served and eaten in the Dining Hall (See Campus Map – 2).

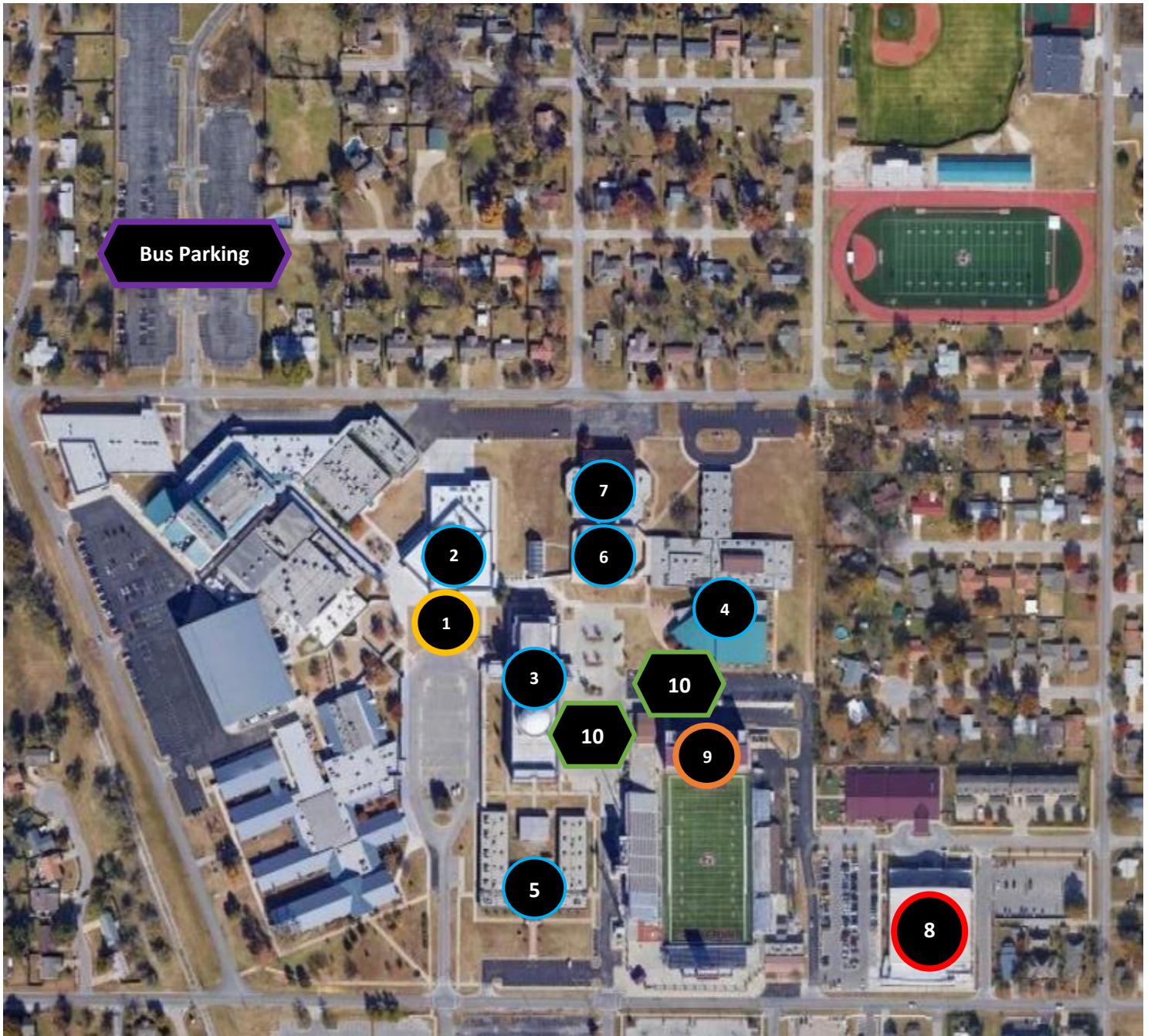
Directions

**Jenks High School
205 East B Street
Jenks, OK 74037**

Units should take the Creek Turnpike and exit at the “Peoria-Elm Jenks” exit. From there, you will turn north on S. Elm St. After passing through the stoplight at W. Main St., make a right turn at the next stoplight on W. B St. Cross over the railroad tracks and turn north at the stop sign which is N. 1st St. There you will be met by a Traffic Coordinator wearing a florescent yellow safety vest who will direct you to Unit Check-In.

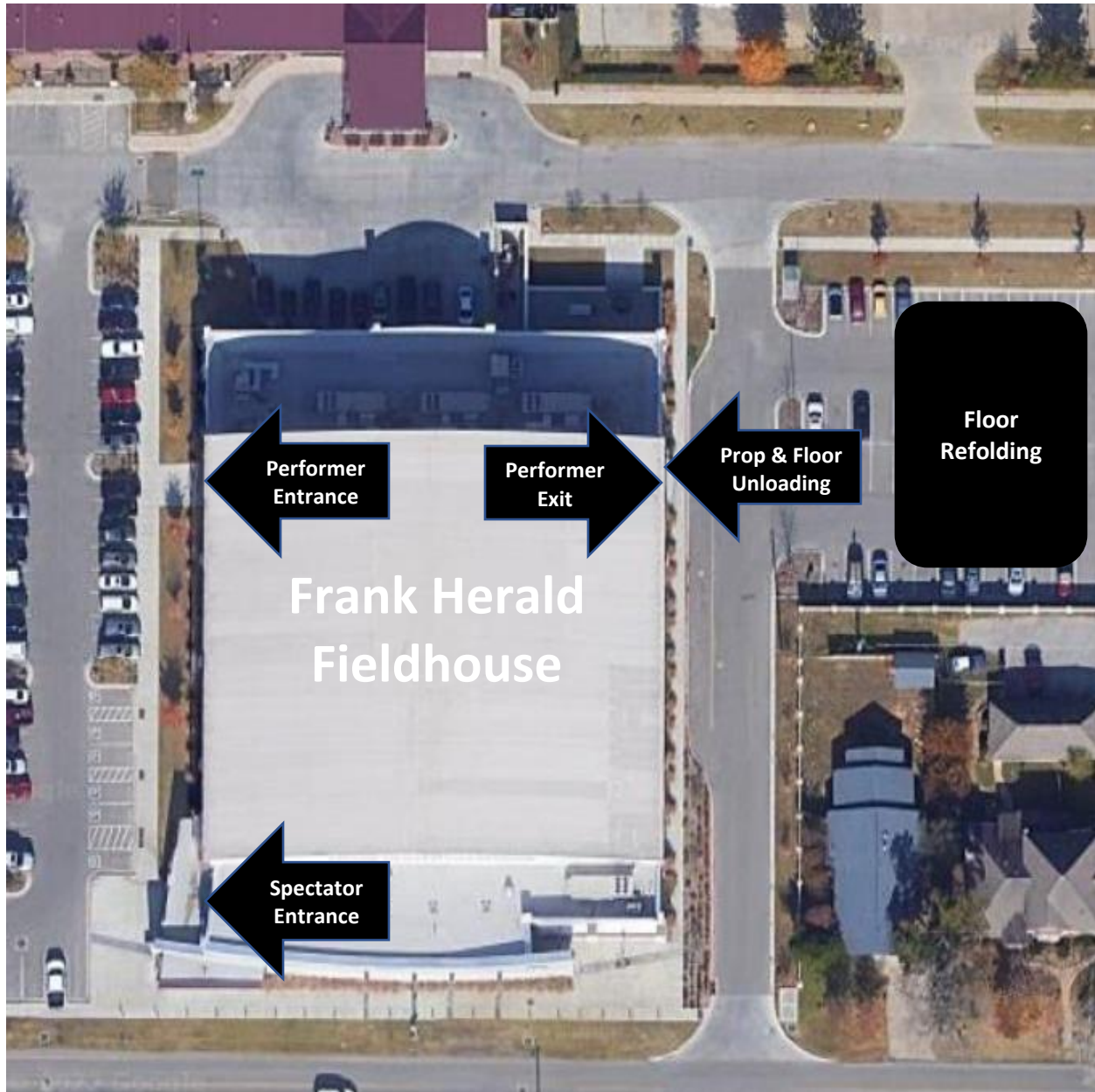


Campus Map



1. Unit Check-in & Unit Drop Off
2. Dining Hall
3. Guard Area 1 – Math & Science Building
4. Guard Area 2 – Freshman Academy
5. Guard Area 3 – Alternative Center
6. Warm-Up Gym-A – PE Gym South
7. Warm-Up Gym-B – PE Gym North
8. Performance Venue – Frank Herald Field House
9. Directors Hospitality – 3rd Floor Robert L. Sharp Fitness Center (take elevator)
10. Equipment Vehicle Parking

Performance Venue Flow



Performance Venue Photo

Jenks High School Frank Herald Field House



Performance Venue Diagram

